

Traffic and Activity > Traffic and Activity Summary

Traffic and Activity Summary

During the Month of October, 2008:

- A total of 9,730 distinct visits were made to the site.
- The average visit lasted 5 Minutes and 1 Second.
- 3,183 distinct web pages were viewed a total of 60,130 times.
- The average visit contained 6,18 page views. People spent an average of 48 Seconds viewing a page.
- Downloadable files were requested 11,519 times. On average 1,18 files were downloaded per visit.

Six Month Historical Comparison

| Usage Breakdown | May, 2008 | Jun, 2008 | Jul, 2008 | Aug, 2008 | Sep, 2008 | Oct 2008 |
|-------------------------|-----------|-----------|-----------|-----------|-----------|----------|
| 1. Visits | 41,528 | 20,344 | 14,157 | 7,402 | 7,757 | 9,730 |
| 2. Page Views | 56,343 | 52,629 | 49,866 | 48,351 | 38,390 | 60,130 |
| 3. Page Views Per Visit | 1,36 | 2,59 | 3,52 | 6,53 | 4,95 | 6,18 |
| 4. Time Spent Per Visit | 00:03:43 | 00:07:45 | 00:09:50 | 00:19:13 | 00:13:55 | 00:16:17 |
| 5. Hits | 143,182 | 128,014 | 104,994 | 106,293 | 112,237 | 127,762 |
| 6. Downloads | 12,523 | 11,493 | 10,768 | 9,644 | 7,366 | 11,507 |
| 7. Bandwidth | 3,81 GB | 3,64 GB | 3,60 GB | 2,93 GB | 2,32 GB | 3,40 GB |

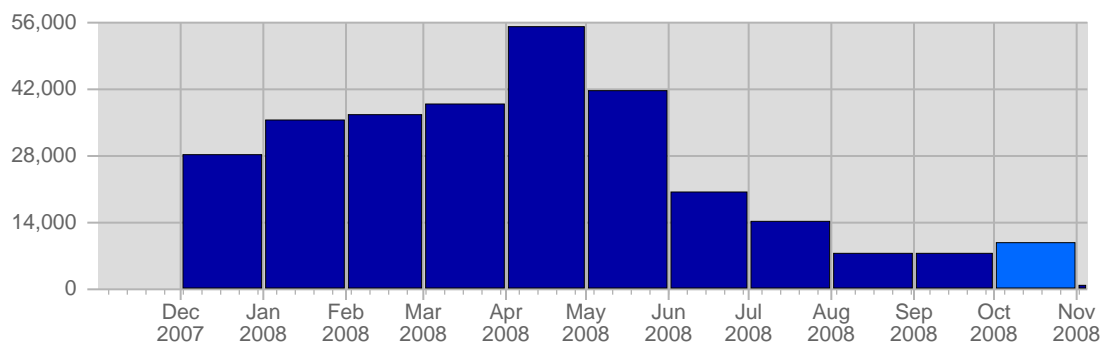
Continued on Page 2 ...

Traffic and Activity > Visits

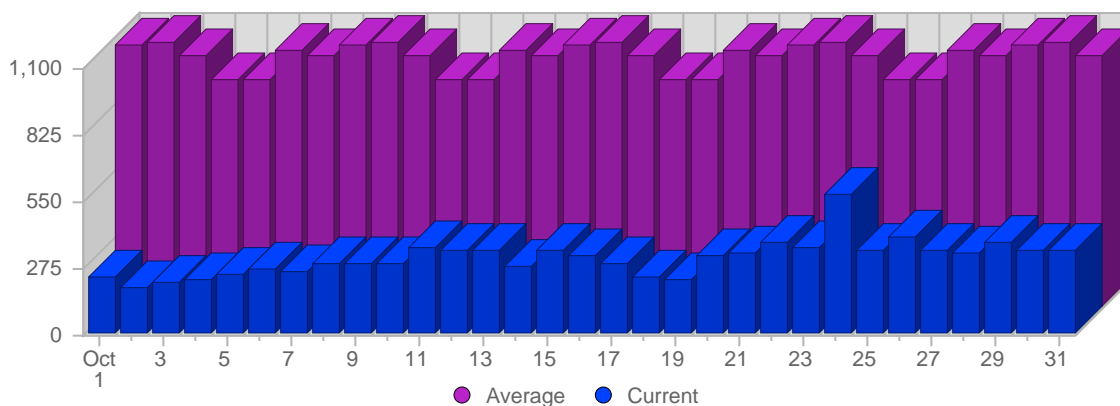
Report Description

Report Description: Visits during the month of October 2008
Report Range: Month of October 2008
Report Scope: Historical Data

Historic Breakdown



Breakdown



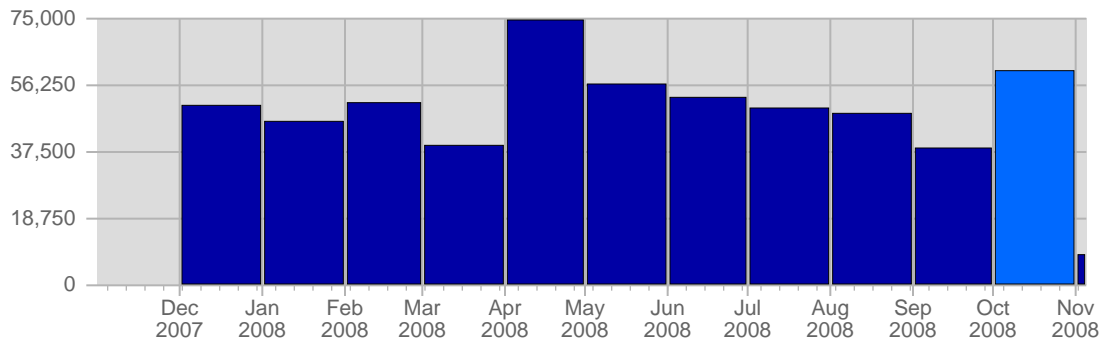
| Date | Total Visits | Average Visits Historically | Change | Percent of Total Visits |
|--------------------|--------------|-----------------------------|--------|-------------------------|
| Wed Oct 1st, 2008 | 233 | 1,079,53 | +233 ▲ | 2,40% |
| Thu Oct 2nd, 2008 | 195 | 1,098,61 | +195 ▲ | 2,00% |
| Fri Oct 3rd, 2008 | 213 | 1,041,96 | +213 ▲ | 2,19% |
| Sat Oct 4th, 2008 | 222 | 944,62 | +222 ▲ | 2,28% |
| Sun Oct 5th, 2008 | 248 | 944,15 | +94 ▲ | 2,55% |
| Mon Oct 6th, 2008 | 272 | 1,058,29 | +20 ▲ | 2,80% |
| Tue Oct 7th, 2008 | 260 | 1,036,37 | +35 ▲ | 2,67% |
| Wed Oct 8th, 2008 | 294 | 1,079,53 | +61 ▲ | 3,02% |
| Thu Oct 9th, 2008 | 289 | 1,098,61 | +94 ▲ | 2,97% |
| Fri Oct 10th, 2008 | 289 | 1,041,96 | +76 ▲ | 2,97% |
| Sat Oct 11th, 2008 | 362 | 944,62 | +140 ▲ | 3,72% |
| Sun Oct 12th, 2008 | 349 | 944,15 | +101 ▲ | 3,59% |
| Mon Oct 13th, 2008 | 343 | 1,058,29 | +71 ▲ | 3,53% |
| Tue Oct 14th, 2008 | 279 | 1,036,37 | +19 ▲ | 2,87% |
| Wed Oct 15th, 2008 | 343 | 1,079,53 | +49 ▲ | 3,53% |
| Thu Oct 16th, 2008 | 322 | 1,098,61 | +33 ▲ | 3,31% |
| Fri Oct 17th, 2008 | 291 | 1,041,96 | +2 ▲ | 2,99% |
| Sat Oct 18th, 2008 | 231 | 944,62 | -131 ▼ | 2,37% |
| Sun Oct 19th, 2008 | 224 | 944,15 | -125 ▼ | 2,30% |
| Mon Oct 20th, 2008 | 329 | 1,058,29 | -14 ▼ | 3,38% |
| Tue Oct 21st, 2008 | 336 | 1,036,37 | +57 ▲ | 3,45% |
| Wed Oct 22nd, 2008 | 374 | 1,079,53 | +31 ▲ | 3,84% |
| Thu Oct 23rd, 2008 | 352 | 1,098,61 | +30 ▲ | 3,62% |
| Fri Oct 24th, 2008 | 574 | 1,041,96 | +283 ▲ | 5,90% |
| Sat Oct 25th, 2008 | 348 | 944,62 | +117 ▲ | 3,58% |
| Sun Oct 26th, 2008 | 403 | 944,15 | +179 ▲ | 4,14% |
| Mon Oct 27th, 2008 | 343 | 1,058,29 | +14 ▲ | 3,53% |
| Tue Oct 28th, 2008 | 338 | 1,036,37 | +2 ▲ | 3,47% |
| Wed Oct 29th, 2008 | 383 | 1,079,53 | +9 ▲ | 3,94% |
| Thu Oct 30th, 2008 | 341 | 1,098,61 | -11 ▼ | 3,51% |
| Fri Oct 31st, 2008 | 350 | 1,041,96 | -224 ▼ | 3,60% |
| | 9,730 | 35,738 | | |

Traffic and Activity > Page Views

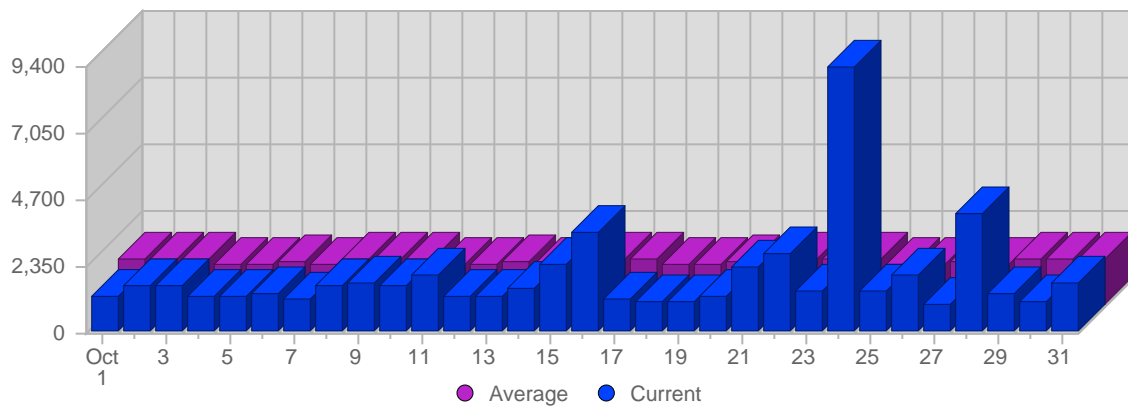
Report Description

Report Description: Page Views during the month of October 2008
 Report Range: Month of October 2008
 Report Scope: Historical Data

Historic Breakdown



Breakdown



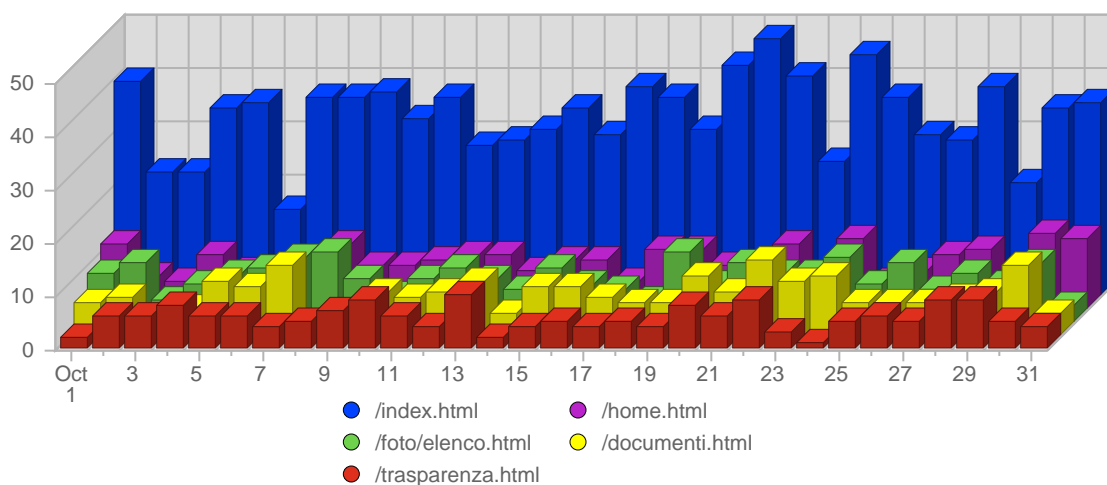
| Date | Total Page Views | Average Page Views Historically | Change | Percent of Total Page Views |
|--------------------|------------------|---------------------------------|----------|-----------------------------|
| Wed Oct 1st, 2008 | 1,309 | 1,649,05 | +1,309 ▲ | 2,18% |
| Thu Oct 2nd, 2008 | 1,636 | 1,602,41 | +1,636 ▲ | 2,72% |
| Fri Oct 3rd, 2008 | 1,634 | 1,670,79 | +1,634 ▲ | 2,72% |
| Sat Oct 4th, 2008 | 1,255 | 1,492,27 | +1,255 ▲ | 2,09% |
| Sun Oct 5th, 2008 | 1,258 | 1,457,90 | +331 ▲ | 2,09% |
| Mon Oct 6th, 2008 | 1,318 | 1,510,49 | -314 ▼ | 2,19% |
| Tue Oct 7th, 2008 | 1,142 | 1,487,32 | -676 ▼ | 1,90% |
| Wed Oct 8th, 2008 | 1,662 | 1,649,05 | +353 ▲ | 2,76% |
| Thu Oct 9th, 2008 | 1,779 | 1,602,41 | +143 ▲ | 2,96% |
| Fri Oct 10th, 2008 | 1,689 | 1,670,79 | +55 ▲ | 2,81% |
| Sat Oct 11th, 2008 | 2,002 | 1,492,27 | +747 ▲ | 3,33% |
| Sun Oct 12th, 2008 | 1,264 | 1,457,90 | +6 ▲ | 2,10% |
| Mon Oct 13th, 2008 | 1,289 | 1,510,49 | -29 ▼ | 2,14% |
| Tue Oct 14th, 2008 | 1,575 | 1,487,32 | +433 ▲ | 2,62% |
| Wed Oct 15th, 2008 | 2,378 | 1,649,05 | +716 ▲ | 3,96% |
| Thu Oct 16th, 2008 | 3,534 | 1,602,41 | +1,755 ▲ | 5,88% |
| Fri Oct 17th, 2008 | 1,216 | 1,670,79 | -473 ▼ | 2,02% |
| Sat Oct 18th, 2008 | 1,116 | 1,492,27 | -886 ▼ | 1,86% |
| Sun Oct 19th, 2008 | 1,060 | 1,457,90 | -204 ▼ | 1,76% |
| Mon Oct 20th, 2008 | 1,242 | 1,510,49 | -47 ▼ | 2,07% |
| Tue Oct 21st, 2008 | 2,309 | 1,487,32 | +734 ▲ | 3,84% |
| Wed Oct 22nd, 2008 | 2,745 | 1,649,05 | +367 ▲ | 4,57% |
| Thu Oct 23rd, 2008 | 1,463 | 1,602,41 | -2,071 ▼ | 2,43% |
| Fri Oct 24th, 2008 | 9,384 | 1,670,79 | +8,168 ▲ | 15,61% |
| Sat Oct 25th, 2008 | 1,481 | 1,492,27 | +365 ▲ | 2,46% |
| Sun Oct 26th, 2008 | 2,043 | 1,457,90 | +983 ▲ | 3,40% |
| Mon Oct 27th, 2008 | 974 | 1,510,49 | -268 ▼ | 1,62% |
| Tue Oct 28th, 2008 | 4,186 | 1,487,32 | +1,877 ▲ | 6,96% |
| Wed Oct 29th, 2008 | 1,323 | 1,649,05 | -1,422 ▼ | 2,20% |
| Thu Oct 30th, 2008 | 1,119 | 1,602,41 | -344 ▼ | 1,86% |
| Fri Oct 31st, 2008 | 1,745 | 1,670,79 | -7,639 ▼ | 2,90% |
| | 60,130 | 45,692 | | |

Pages and Content > Pages

Report Description

Report Description: Pages visitors viewed during the month of October 2008
 Report Range: Month of October 2008
 Report Scope: Historical Data
 List Size: 25 of 3183

Breakdown



| # | Title & Page | Total Page Views | Average Page Views Historically | Change | Percent of Page Views |
|-----|------------------------|------------------|---------------------------------|--------|-----------------------|
| 1. | /index.html | 1,044 | 1,359,61 | +207 ▲ | 1,73% |
| 2. | /home.html | 272 | 208,74 | +37 ▲ | 0,45% |
| 3. | /foto/elenco.html | 262 | 315,48 | +28 ▲ | 0,44% |
| 4. | /documenti.html | 236 | 168,57 | +23 ▲ | 0,39% |
| 5. | /trasparenza.html | 173 | 158,57 | -17 ▼ | 0,29% |
| 6. | /referendum_story.html | 163 | 214,48 | +49 ▲ | 0,27% |
| 7. | /audio-video.html | 153 | 149,39 | +8 ▲ | 0,25% |
| 8. | /link.html | 152 | 120,35 | +33 ▲ | 0,25% |
| 9. | /risultati.html | 148 | 245,48 | +2 ▲ | 0,25% |
| 10. | /snaidero.html | 146 | 122,04 | +5 ▲ | 0,24% |
| 11. | /gentili.html | 131 | 124,87 | -1 ▼ | 0,22% |
| 12. | /comitato_260305.html | 130 | 129,65 | +23 ▲ | 0,22% |
| 13. | /comunicati_fvg1.html | 126 | 93,17 | +17 ▲ | 0,21% |
| 14. | /articoli_fvg.html | 116 | 95,70 | +3 ▲ | 0,19% |
| 15. | /innocenzi.html | 108 | - | +108 ▲ | 0,18% |
| 16. | /mendizza_150106.html | 99 | 70,04 | -5 ▼ | 0,16% |
| 17. | /illy.html | 93 | 75,22 | +13 ▲ | 0,16% |

Continued on Page 2 ...

... continued from Page 1

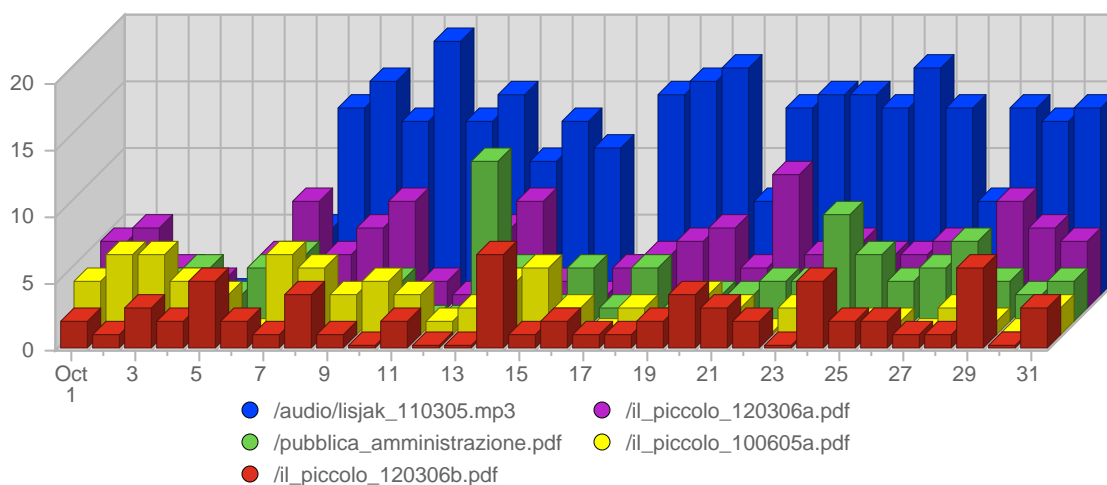
| | | | | | |
|-----|---------------------------------|--------|--------|-------|-------|
| 18. | /gorizia_270908.html | 91 | 45,50 | +71 ▲ | 0,15% |
| 19. | /miliardari.html | 89 | 100,09 | -5 ▼ | 0,15% |
| 20. | /timisoara.html | 88 | 79,35 | +18 ▲ | 0,15% |
| 21. | /foto_pipi/index.html | 87 | 71,52 | +18 ▲ | 0,15% |
| 22. | /osimo.html | 85 | 108,09 | -1 ▼ | 0,14% |
| 23. | /legalizzare_prostituzione.html | 82 | 65,30 | +11 ▲ | 0,14% |
| 24. | /firmatari.html | 81 | 25,00 | +66 ▲ | 0,14% |
| 25. | /documenti_fvg.html | 75 | 86,39 | +23 ▲ | 0,13% |
| | | 60,193 | 44,206 | | |

Pages and Content > Media & Downloads

Report Description

Report Description: Downloads during the month of October 2008
 Report Range: Month of October 2008
 Report Scope: Historical Data
 List Size: 25 of 826

Breakdown



| # | File | Total Downloads | Average Downloads Historically | Change | Percent of Downloads |
|-----|------------------------------------|-----------------|--------------------------------|--------|----------------------|
| 1. | /audio/lisjak_110305.mp3 | 323 | - | +323 ▲ | 2,80% |
| 2. | /il_piccolo_120306a.pdf | 141 | 215,00 | +1 ▲ | 1,22% |
| 3. | /pubblica_amministrazione.pdf | 97 | 61,77 | +30 ▲ | 0,84% |
| 4. | /il_piccolo_100605a.pdf | 75 | 57,78 | 0 ▬ | 0,65% |
| 5. | /il_piccolo_120306b.pdf | 66 | 96,00 | +17 ▲ | 0,57% |
| 6. | /quesito_garanti.pdf | 61 | 30,50 | +53 ▲ | 0,53% |
| 7. | /messaggero_280908.pdf | 60 | 30,00 | +49 ▲ | 0,52% |
| 8. | /il_piccolo_280908.pdf | 59 | 29,50 | +46 ▲ | 0,51% |
| 9. | /quesito_3_radicali_definitivo.pdf | 58 | 29,00 | +51 ▲ | 0,50% |
| 10. | /statistiche_0908.pdf | 53 | - | +53 ▲ | 0,46% |
| 11. | /quesito_delib.pdf | 52 | 26,00 | +44 ▲ | 0,45% |
| 12. | /messaggero_120306.pdf | 49 | 81,09 | -22 ▼ | 0,43% |
| 13. | /messaggero_081008.pdf | 48 | - | +48 ▲ | 0,42% |
| 14. | /messaggero_200904.pdf | 48 | 28,39 | +9 ▲ | 0,42% |
| 15. | /messaggero_011008.pdf | 44 | - | +44 ▲ | 0,38% |
| 16. | /coscioni_udine.pdf | 43 | - | +43 ▲ | 0,37% |
| 17. | /pd_2003a.pdf | 42 | 27,50 | +20 ▲ | 0,37% |

Continued on Page 2 ...

... continued from Page 1

| | | | | | |
|-----|-------------------------|--------|-------|-------|-------|
| 18. | /quesito_piazza.pdf | 41 | 20,50 | +34 ▲ | 0,36% |
| 19. | /messaggero_171008b.pdf | 41 | - | +41 ▲ | 0,36% |
| 20. | /messaggero_151008.pdf | 39 | - | +39 ▲ | 0,34% |
| 21. | /messaggero_171008a.pdf | 39 | - | +39 ▲ | 0,34% |
| 22. | /trieste_200908b.pdf | 38 | 19,00 | -5 ▼ | 0,33% |
| 23. | /quelle_fiamme.pdf | 37 | 30,26 | +11 ▲ | 0,32% |
| 24. | /messaggero_191008a.pdf | 36 | - | +36 ▲ | 0,31% |
| 25. | /messaggero_260507.pdf | 36 | 26,89 | 0 ▬ | 0,31% |
| | | 11,519 | 7,779 | | |